

**UNIVERSITY OF ALABAMA SYSTEM
BOARD RULE 415
BOARD SUBMITTAL CHECKLIST CRITERIA**

**BOARD SUBMITTAL CHECKLIST NO. 3
CAPITAL PROJECT - STAGE III SUBMITTAL ^{/1}
(Architectural Design)**

CAMPUS: The University of Alabama

PROJECT NAME: Geological Survey of Alabama and State Oil & Gas Board Core Repository Facility

MEETING DATE: Aug 31- Sep 1, 2023

- ☒ 1. Board Submittal Checklist No. 3
- ☒ 2. Transmittal Letter to Chancellor from Campus President requesting project be placed on the agendas for the forthcoming Physical Properties Committee and Board of Trustees (or Executive Committee) Meetings
- ☒ 3. Proposed Board Resolution requesting approval of Project Design (Architectural Design and authority to proceed with final construction documents) by the Board of Trustees
- ☐ N/A 4. Executive Summary - Proposed Capital Project ^{/2}
- ☒ 5. Architectural rendering of project (Final design prior to the initiation of construction documents on the project)
- ☒ 6. Campus map(s) showing project site

Prepared by: Lane Weaver

Approved by:

Jim Leopold
CN

MR

^{/1} Reference Tab 3H - Board Rule 415 Instructional Guide

^{/2} Reference Tab 3E - Board Rule 415 Instructional Guide



Office of the
President

July 27, 2023

Chancellor Finis E. St. John IV
The University of Alabama System
500 University Boulevard East
Tuscaloosa, Alabama 35401

Dear Chancellor St. John:

I am pleased to send to you for approval under Board Rule 415 the attached documents for a Stage III- Architectural Design submittal for the Geological Survey of Alabama and State Oil and Gas Board Core Repository Facility project.

The resolution requests approval of the Architectural Design for the project.

The item has been thoroughly reviewed and has my endorsement. With your concurrence, I ask that it be added to the agenda for The Board of Trustees at their regular meeting on Aug 31- Sep 1, 2023.

Sincerely,

A handwritten signature in black ink, appearing to read "Stuart R. Bell".

Stuart R. Bell
President

Enclosure



THE UNIVERSITY OF ALABAMA

RESOLUTION

APPROVAL OF THE PROPOSED ARCHTECTURAL DESIGN FOR THE GEOLOGICAL
SURVEY OF ALABAMA AND STATE AND OIL AND GAS BOARD OF ALABAMA CORE
REPOSITORY FACILITY

WHEREAS, the Geological Survey of Alabama and State Oil and Gas Board of Alabama (“GSA/OGB”), agencies of the State of Alabama, request approval from the Board of Trustees of The University of Alabama (“Board”) to construct and operate a Core and Sample Repository (“Project”) to be located at the northwestern edge of the University Services Campus of the University of Alabama (“University”); and

WHEREAS, the Geological Survey of Alabama has been located on the University campus for more than one hundred years, and the State Oil and Gas Board has been located on the University campus since 1945; and

WHEREAS, The University of Alabama (“University”) and the Geological Survey of Alabama and State Oil and Gas Board of Alabama desire to maintain the long-established relationships and to provide for the safe and wise development and for the prudent management of the natural resources of Alabama through cooperative efforts and research programs; and

WHEREAS, the Core and Sample Repository (“CSR”) is an essential resource for University faculty and students working in geology and is actively used for research and teaching; and

WHEREAS, the GSA/OGB have legislatively mandated responsibility for the testing, evaluation, warehousing, and preservation of Alabama natural resource samples; and

WHEREAS, as the existing repository is presently filled to 99% capacity, the proposed new CSR will provide a main storage area with adequate capacity to receive, document and analyze new materials allowing GSA/OGB to serve the storage demands, including University collections, at this time and into the future; and

WHEREAS, construction of the CSR will allow for the allocation of the existing space under lease by GSA/OGB on the first floor of Mary Harmon Bryant Hall to be returned to the University for University purposes and needs; and

WHEREAS, the Ground Lease concurrently under consideration by the Board includes certain conditions and rights for benefit of the University including approval of the physical appearance of the CSR by the Board in accordance with Board Rule 415; and

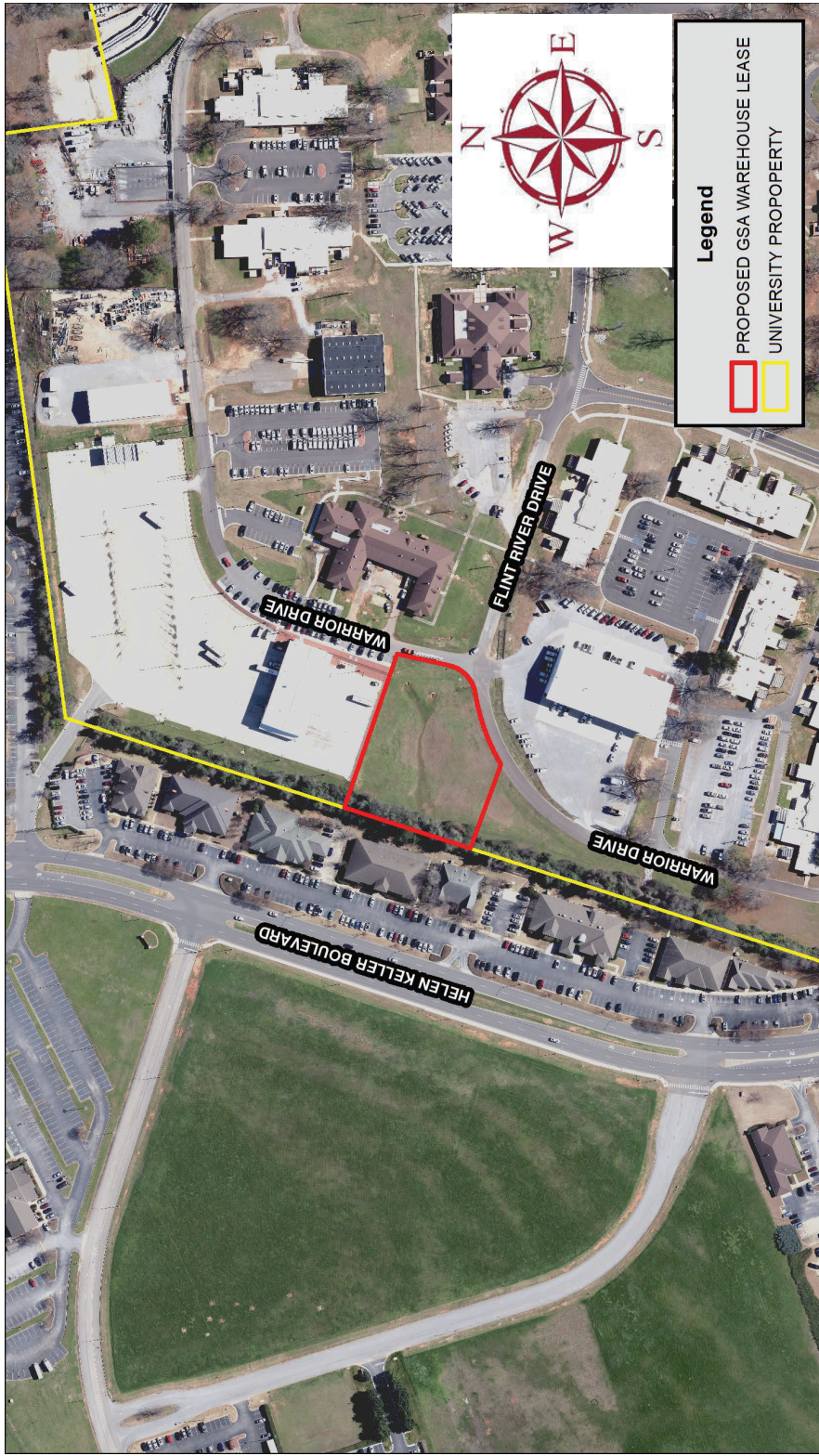
WHEREAS, the exterior materials, character, form and use are consistent with University facilities in the immediate area of the proposed CSR; and

WHEREAS, responsible officials at the University have received renderings for the Stage III submittal and are recommending approval of said design; and

NOW, THEREFORE BE IT RESOLVED by the Board of Trustees of The University of Alabama that the Architectural Design Stage III submittal for the Project is hereby approved.

Geological Survey and State Oil and Gas Board of Alabama Core Repository Facility

SITE MAP



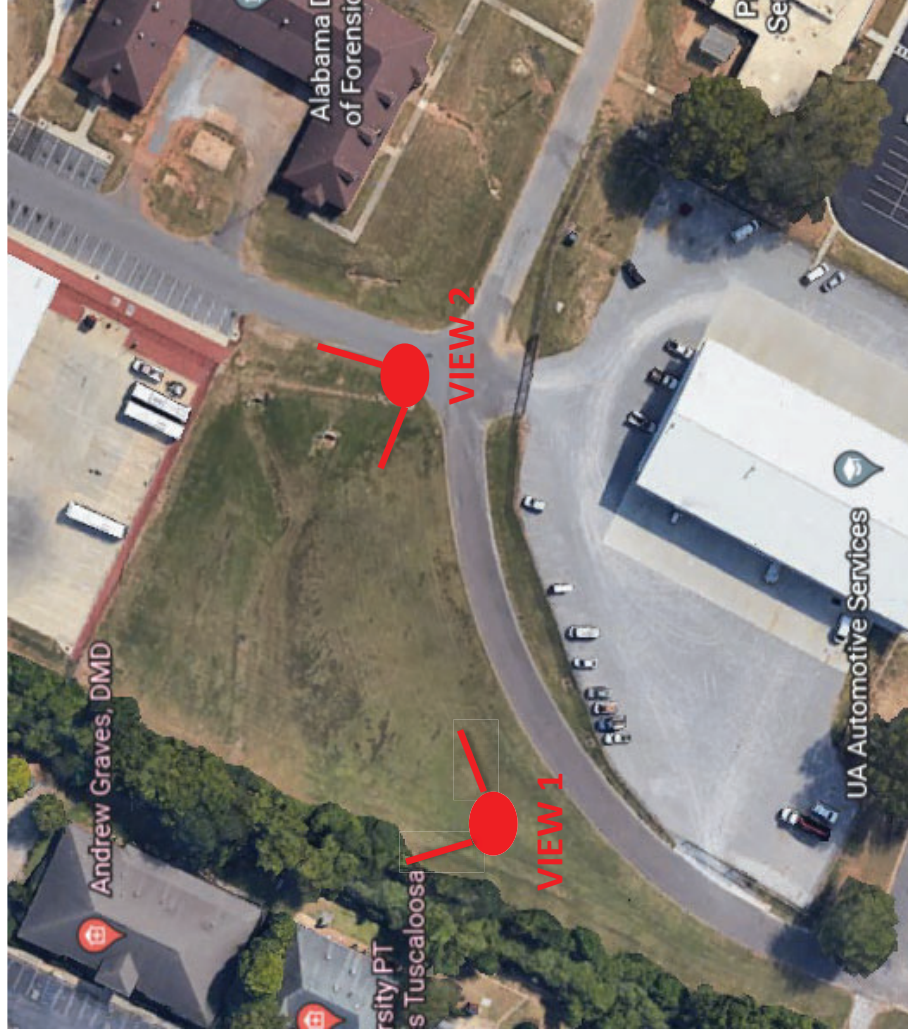
Geological Survey and State Oil and Gas Board of Alabama Core Repository Facility

Existing Site Conditions



Geological Survey and State Oil and Gas Board of Alabama Core Repository Facility

Vantage Points



Geological Survey and State Oil and Gas Board of Alabama Core Repository Facility

Vantage Point - 1
View from Warrior Drive looking North



Geological Survey and State Oil and Gas Board of Alabama Core Repository Facility

Vantage Point - 2
View from Warrior Drive looking Northwest



Geological Survey and State Oil and Gas Board of Alabama

Core Repository Facility

Massing Study

Name of Building	Height from Finished Floor to Roof Ridge	Width (East to West)	Depth (North to South)
GSA/OGB Core Repository Facility	~ 39 feet	~198 feet	~101 feet
Automotive Services Building	~ 33 feet	~ 83feet	~202 feet
Bus Maintenance Facility	~ 31 feet	~ 163 feet	~ 75 feet

Geological Survey and State Oil and Gas Board of Alabama Core Repository Facility

LOCATION MAP

